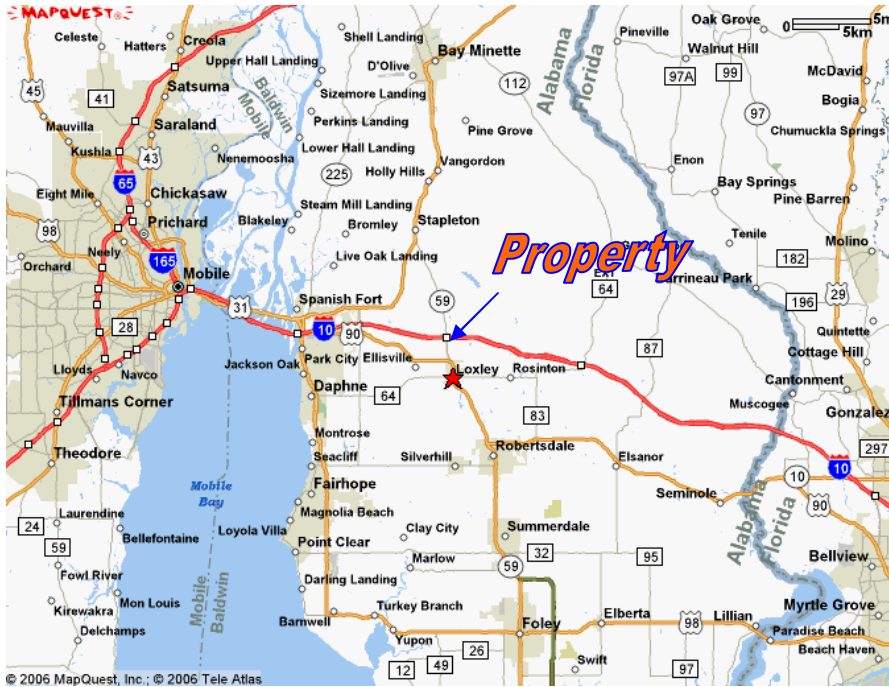




Cunningham, Foley & Barnes  
Real Estate Sales & Development

# Loxley, Alabama

## I-10 and Highway 59 South



Property is located 1/2 mile south of I-10

Property is a short distance from Mobile, Daphne, Fairhope, and Pensacola.



**1.69 Acres on Highway 59**

**1285' Highway 59 frontage**

**2004 Traffic Count: 22,940 vehicles per day**

**Prime Investment Opportunity**

**Income Producing**

**\$400,000**

**Additional Parcels Available**

**Contact: Joe Steen**  
Phone: 251-943-5210  
Cell: 251-605-3845  
Email: [jsteen@cfbre.com](mailto:jsteen@cfbre.com)

**Contact: Milt Rowell**  
Phone: 251-943-3467  
Cell: 251-421-1609  
Email: [mrowell@cfbre.com](mailto:mrowell@cfbre.com)

**Cunningham, Foley & Barnes**

P O Box 1847  
Foley, AL 36536  
(251) 943-5989



The information contained herein has been obtained from sources believed to be reliable. While we do not doubt its accuracy, we have not verified it and make no guarantee, warranty or representation about it. It is your responsibility to independently confirm its accuracy and completeness. Any projections, opinions, assumptions or estimates used are for example only and do not represent the current or future performance of the property. The value of this transaction to you depends on tax and other factors which should be evaluated by your tax, financial and legal advisors. You and your advisors should conduct a careful, independent investigation of the property to determine to your satisfaction the suitability of the property for your needs.

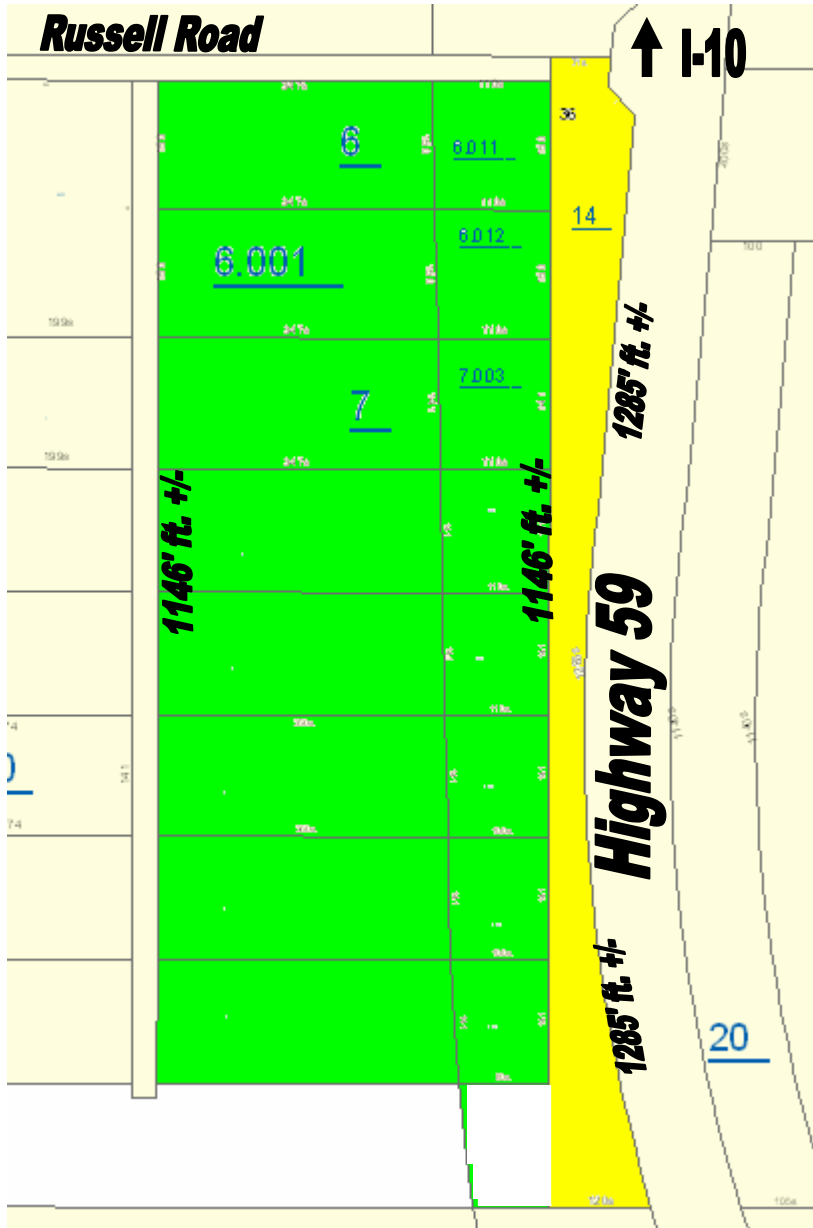
[www.cfbre.com](http://www.cfbre.com)



Cunningham, Foley & Barnes  
Real Estate Sales & Development

# Loxley, Alabama

## I-10 and Highway 59 South



**Listed Parcel:**  
1.69 Acres on  
Highway 59

1285' Highway 59 frontage

**\$400,000**

**Zoned B-1**

**Available Parcels:**  
There are available parcels  
located west of the 1.69 acres

The additional parcels  
measure roughly 13.64 acres

**Zoned in County District 11**

Contact: Joe Steen  
Phone: 251-943-5210  
Cell: 251-605-3845  
Email: [jsteen@cfbre.com](mailto:jsteen@cfbre.com)

Contact: Milt Rowell  
Phone: 251-943-3467  
Cell: 251-421-1609  
Email: [mrowell@cfbre.com](mailto:mrowell@cfbre.com)

**\$400,000**

**Yellow area is the listed parcel**

**Available**

**Green areas are the available parcels**

**Cunningham, Foley &  
Barnes**

P O Box 1847  
Foley, AL 36536

[www.cfbre.com](http://www.cfbre.com)

The information contained herein has been obtained from sources believed to be reliable. While we do not doubt its accuracy, we have not verified it and make no guarantee, warranty or representation about it. It is your responsibility to independently confirm its accuracy and completeness. Any projections, opinions, assumptions or estimates used are for example only and do not represent the current or future performance of the property. The value of this transaction to you depends on tax and other factors which should be evaluated by your tax, financial and legal advisors. You and your advisors should conduct a careful, independent investigation of the property to determine to your satisfaction the suitability of the property for your needs.

